

INDUSTRIAL LAND FOR SALE

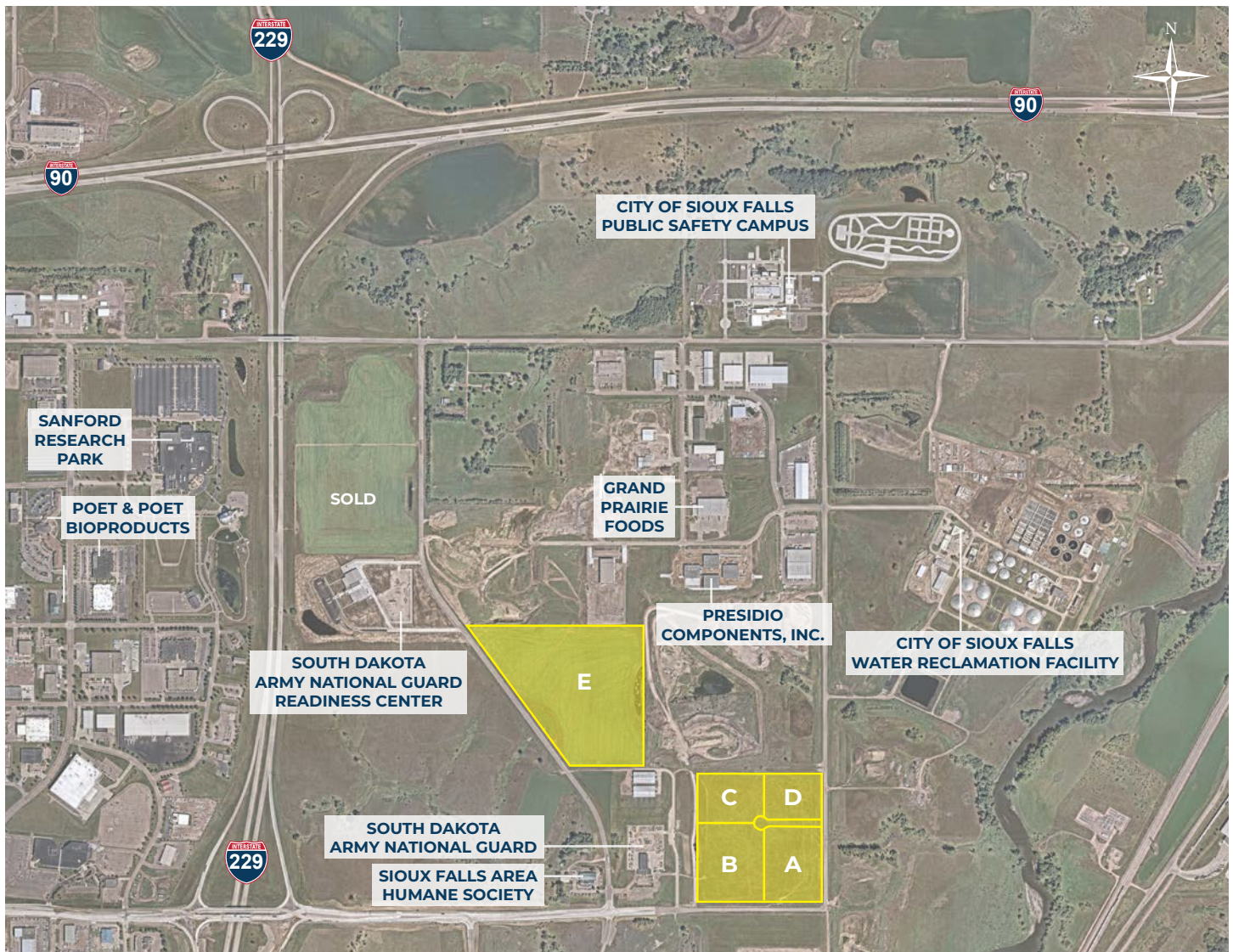
SIOUX EMPIRE DEVELOPMENT PARK VIII WEST

SIOUX FALLS, SOUTH DAKOTA



SIOUX FALLS

DEVELOPMENT FOUNDATION



REV. 04/2026

PROPERTY FEATURES

- Protective covenants in place
- Zoned for I-1 for light industrial
- On-site detention (BMP) required
- Range of 8- to 36-acre sites available
- Subdividable or combined

PRICING

- Parcels A, B, C & D – \$4.50 psf
- Parcel E – \$4.00 psf

LOCATION

- Located near the intersection of I-229 & I-90
- Minutes from Sioux Falls Regional Airport (FSD)

DEAN DZIEDZIC

VP OF ECONOMIC DEVELOPMENT

DEAND@SIOUXFALLS.COM | 605-988-4259

INDUSTRIAL LAND FOR SALE

SIOUX EMPIRE DEVELOPMENT PARK VIII WEST
SIOUX FALLS, SOUTH DAKOTA



PARCEL	ACRES	PRICE/SF
A	9.92+/-	\$4.50
B	10.31+/-	\$4.50
C	6.03+/-	\$4.50
D	5.64+/-	\$4.50
E	36+/-	\$4.00

REV. 04/2026

DEAN DZIEDZIC

VP OF ECONOMIC DEVELOPMENT

DEAND@SIOUXFALLS.COM | 605-988-4259

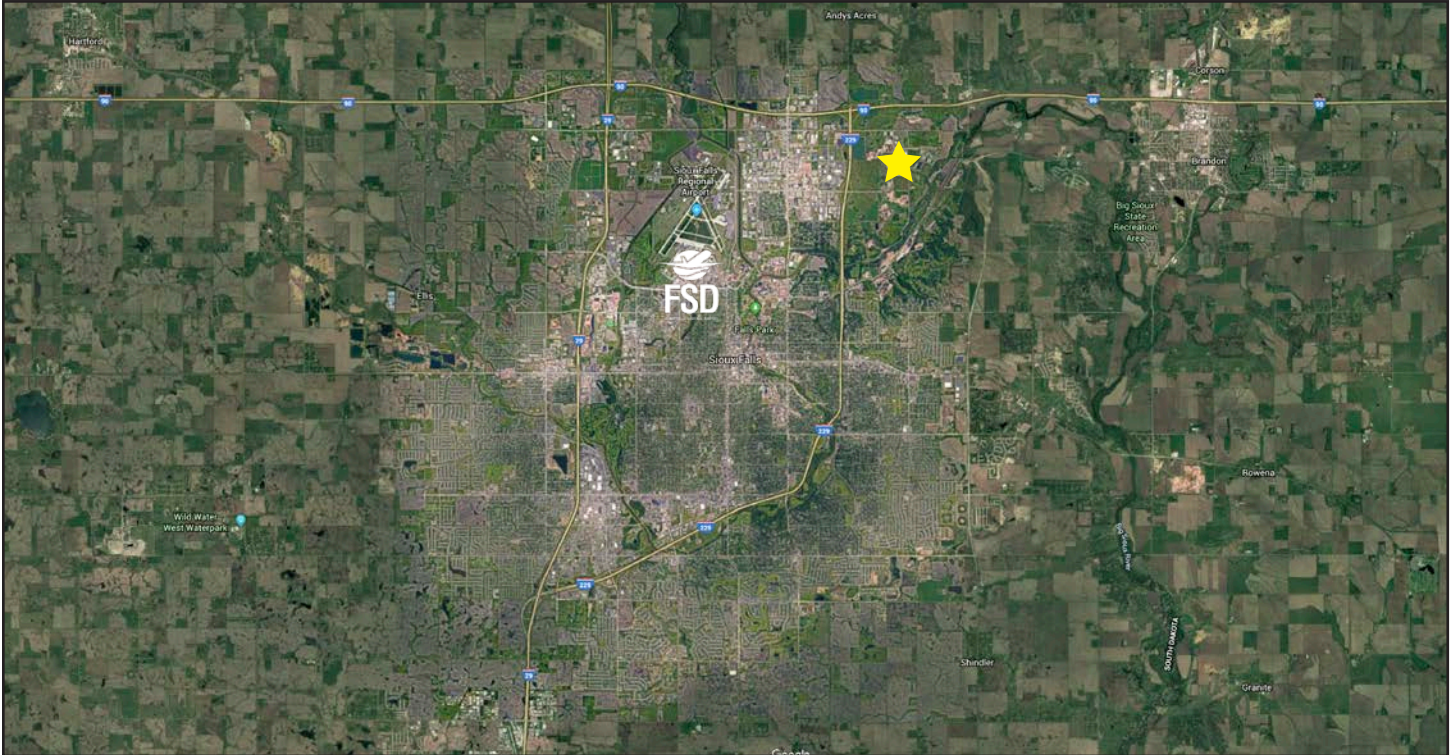
INDUSTRIAL LAND FOR SALE

SIOUX EMPIRE DEVELOPMENT PARK VIII WEST

SIOUX FALLS, SOUTH DAKOTA



SIOUX FALLS
DEVELOPMENT FOUNDATION



DEAN DZIEDZIC

VP OF ECONOMIC DEVELOPMENT

DEAND@SIOUXFALLS.COM | 605-988-4259