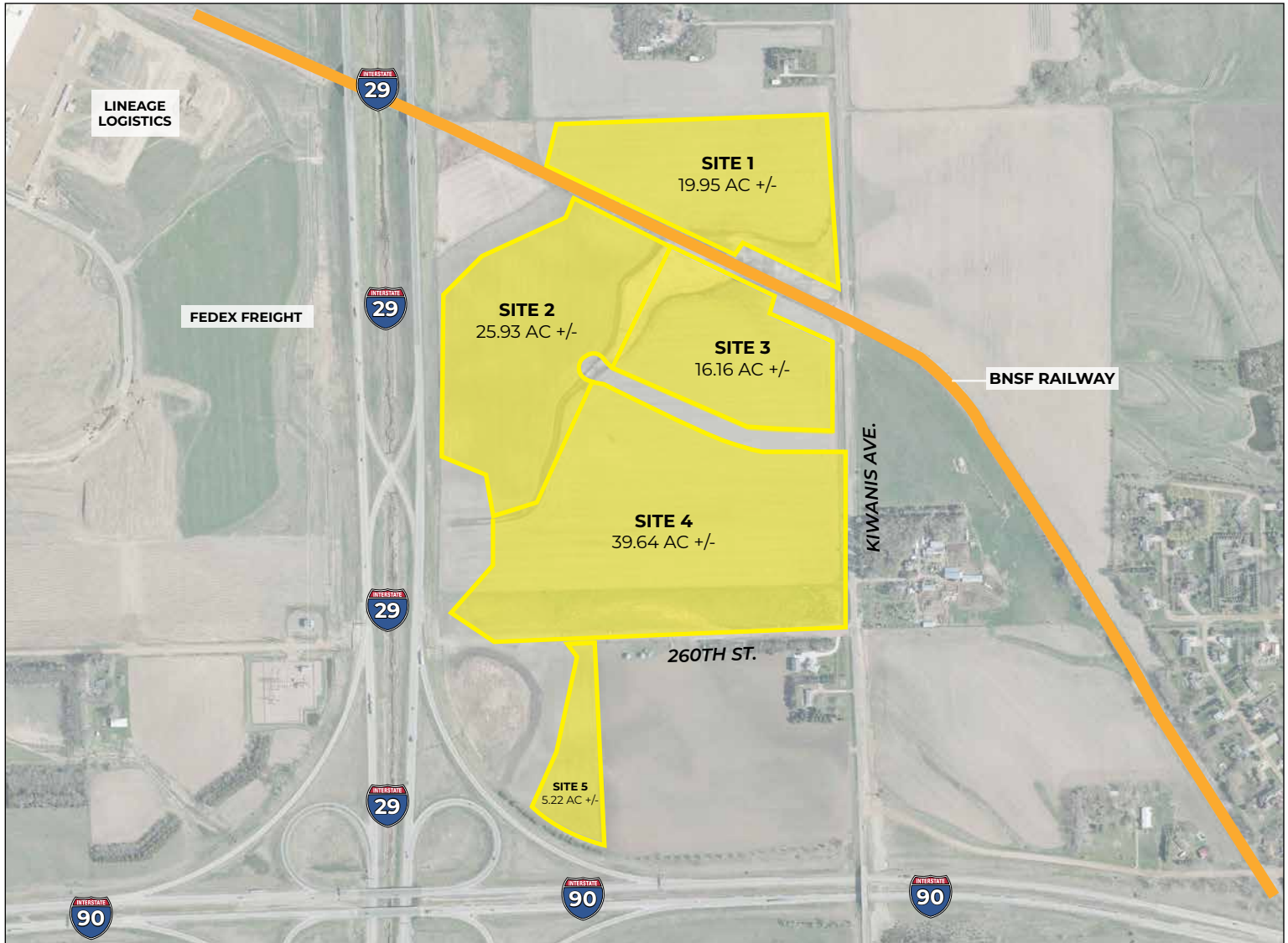


## FOUNDATION PARK EAST

Sioux Falls, South Dakota



### PROPERTY FEATURES

- BNSF Class I rail site
- Zoned I-2
- All utilities to site
- On-site detention (BMP) required
- Subdividable or combined

### PRICING

- Rail Access – Starting at \$4.00 psf
- Non-Rail Access – Starting at \$4.00 psf

### LOCATION

- Located at intersection of I-29 & I-90
- Minutes from Sioux Falls Regional Airport (FSD)
- ~20,000 total traffic volume per day

**FOR MORE INFORMATION CALL 605-274-0474**

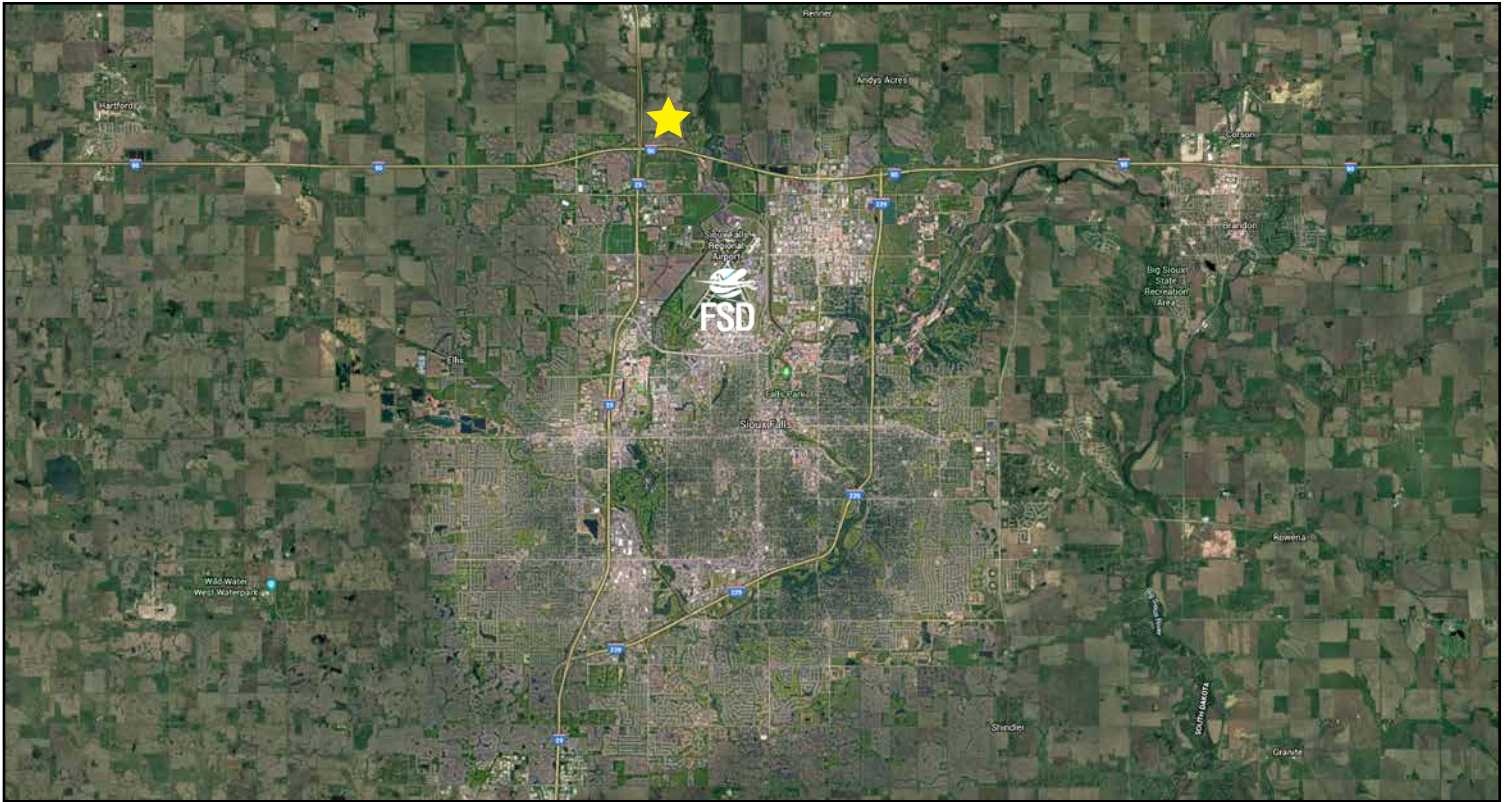
## FOUNDATION PARK EAST

Sioux Falls, South Dakota

<i>RAIL ACCESS LOTS</i>			
		<i>ACRES</i>	<i>PRICE/SF RANGE</i>
	Site 1	19.95	\$4.50
	Site 2	25.93	\$4.00
	Site 3	16.16	\$4.50
<i>NON-RAIL</i>			
	Site 4	39.64	\$4.00
	Site 5	5.22	\$4.50

## FOUNDATION PARK EAST

Sioux Falls, South Dakota



605.339.0103

siouxfallsdevelopment.com

**DEAN DZIEDZIC**  
*Vice President of Economic Development*  
deand@siouxfalls.com

**BOB MUNDT**  
*President/CEO of Economic Development*  
bobm@siouxfalls.com



605.336.7600

benderco.com

**ROB FAGNAN, SIOR**  
*Principal – Industrial & Land Markets*  
rob@benderco.com

**MICHAEL BENDER, CCIM, SIOR**  
*Principal – Office & Land Markets*  
michael@benderco.com



605.357.7100

siouxfallscommercial.com

**GREGG BROWN, MBA, SIOR**  
*Senior Vice President/Managing Director*  
gbrown@naisiouxfalls.com

**DENNIS BRESKE, CCIM, SIOR, MBA**  
*Senior Vice President*  
dbreske@naisiouxfalls.com