

## SIOUX EMPIRE DEVELOPMENT PARK PARK VIII - EAST

Sioux Falls, South Dakota



### PROPERTY FEATURES

- Protective covenants in place
- Zoned I-1 for light industrial
- All utilities to site
- On-site detention (BMP) required
- Range of 3-12 acre sites available
- All lots build-ready
- Subdividable or combined

### PRICING

- Starting at \$3.00 psf

### LOCATION

- Minutes from Sioux Falls Regional Airport (FSD)
- Located near the intersection of I-229 & I-90
- 60th Street North frontage available

**FOR MORE INFORMATION CALL 605-223-1066**

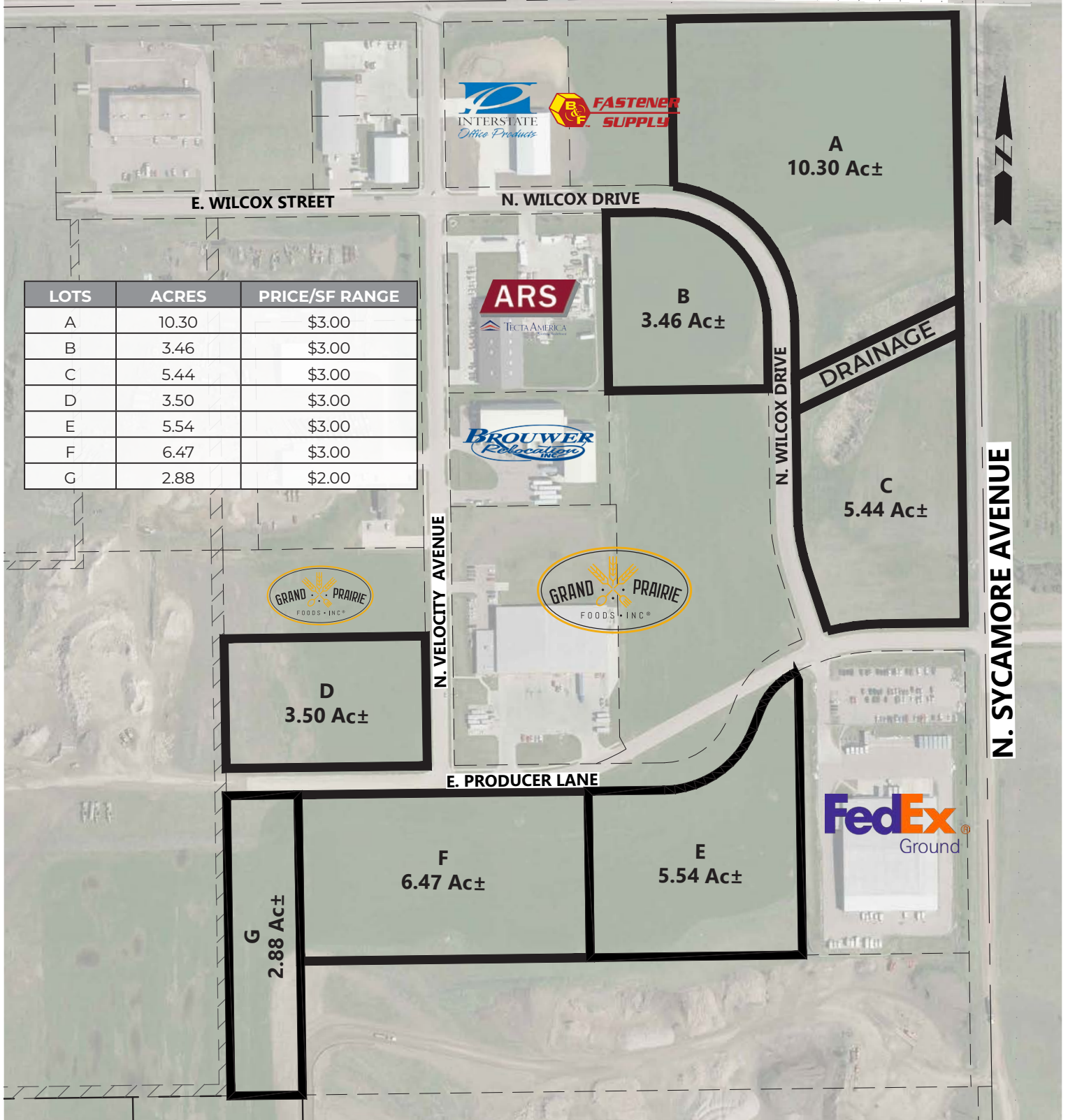


# INDUSTRIAL LAND FOR SALE

## SIOUX EMPIRE DEVELOPMENT PARK PARK VIII - EAST

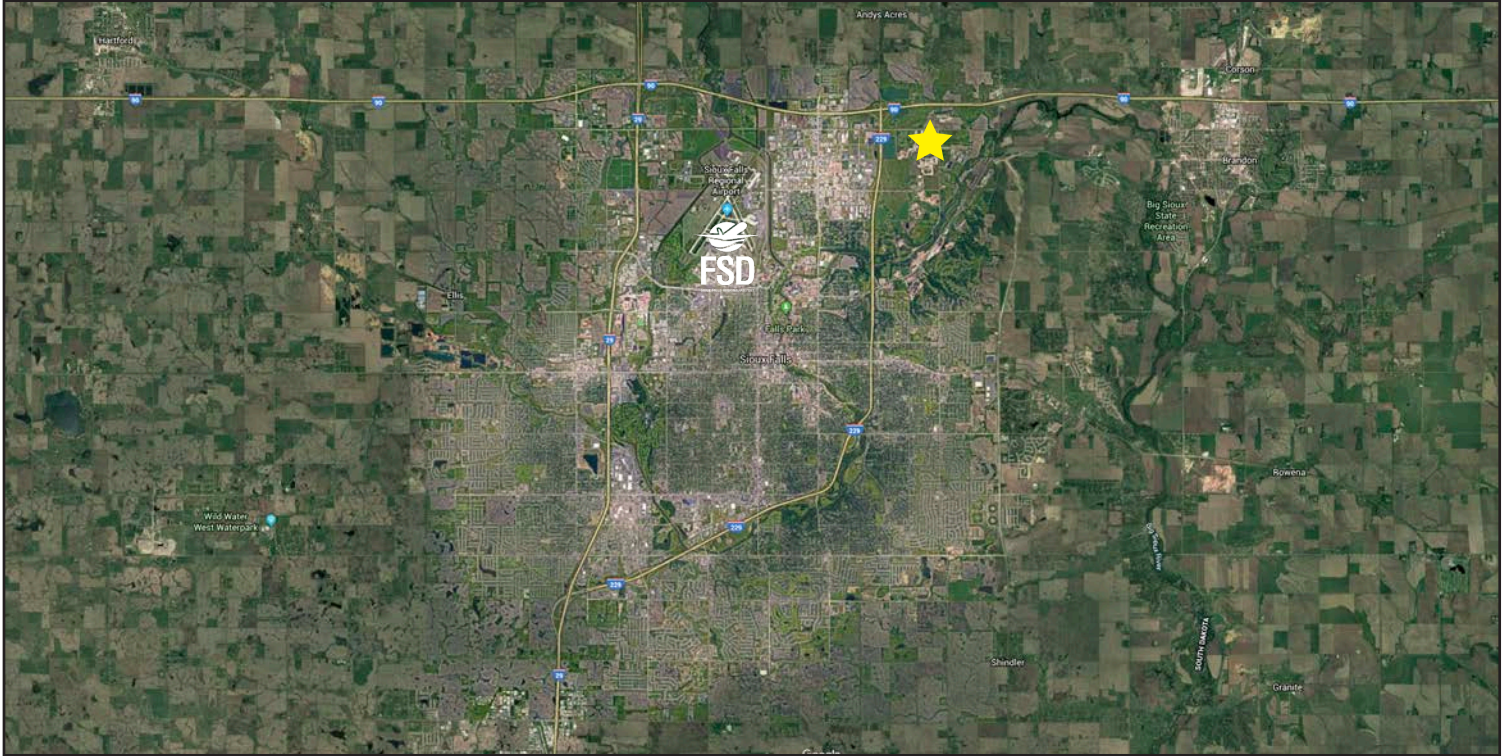
Sioux Falls, South Dakota

### E. 60th STREET NORTH / CO. HWY. No. 106



## SIoux EMPIRE DEVELOPMENT PARK PARK VIII - EAST

*Sioux Falls, South Dakota*



605.339.0103

[siouxfallsdevelopment.com](http://siouxfallsdevelopment.com)

**DEAN DZIEDZIC**  
*Vice President of Economic Development*  
[deand@siouxfalls.com](mailto:deand@siouxfalls.com)

**BOB MUNDT**  
*President/CEO of Economic Development*  
[bobm@siouxfalls.com](mailto:bobm@siouxfalls.com)



605.336.7600

[benderco.com](http://benderco.com)

**ROB FAGNAN, SIOR**  
*Principal – Industrial & Land Markets*  
[rob@benderco.com](mailto:rob@benderco.com)

**MICHAEL BENDER, CCIM, SIOR**  
*Principal – Office & Land Markets*  
[michael@benderco.com](mailto:michael@benderco.com)



605.357.7100

[siouxfallscommercial.com](http://siouxfallscommercial.com)

**GREGG BROWN, MBA, SIOR**  
*Senior Vice President/Managing Director*  
[gbrown@naisiouxfalls.com](mailto:gbrown@naisiouxfalls.com)

**DENNIS BRESKE, CCIM, SIOR, MBA**  
*Senior Vice President*  
[dbreske@naisiouxfalls.com](mailto:dbreske@naisiouxfalls.com)