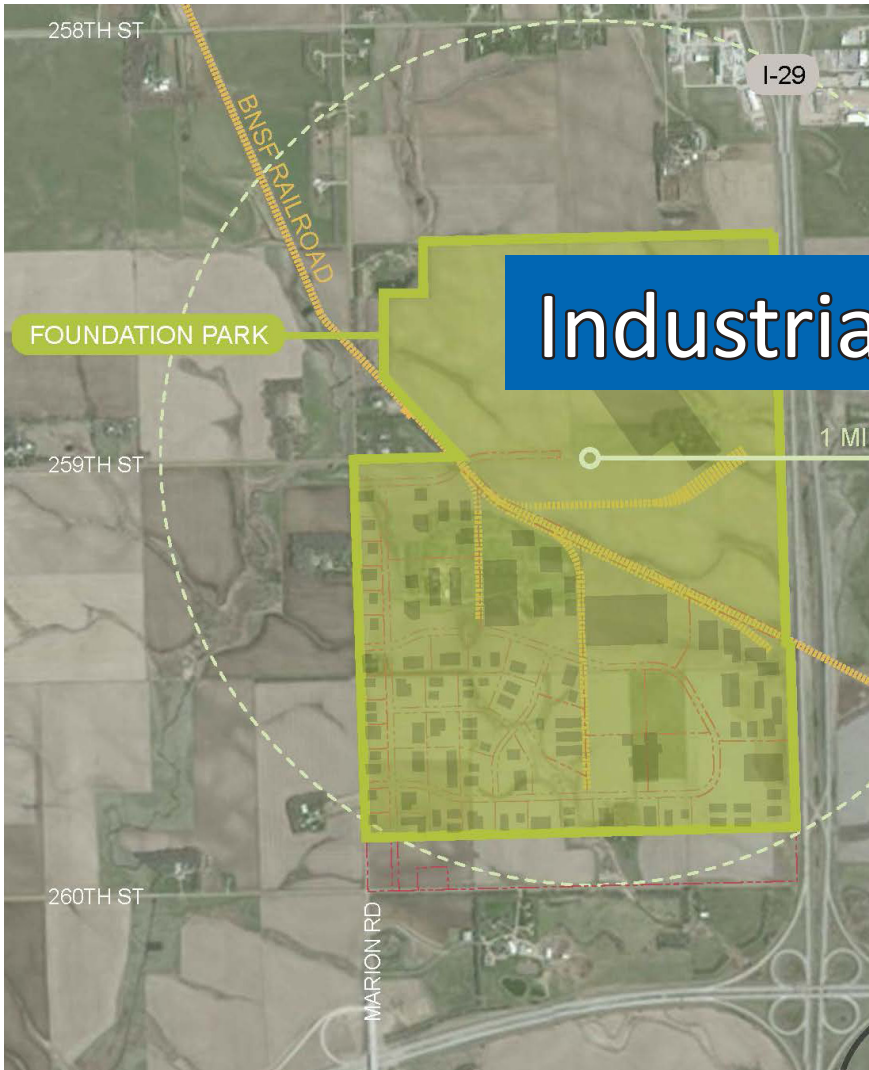


# Foundation Park

Sioux Falls, South Dakota



SIoux FALLS  
**Development  
Foundation**



## Industrial Land for Sale



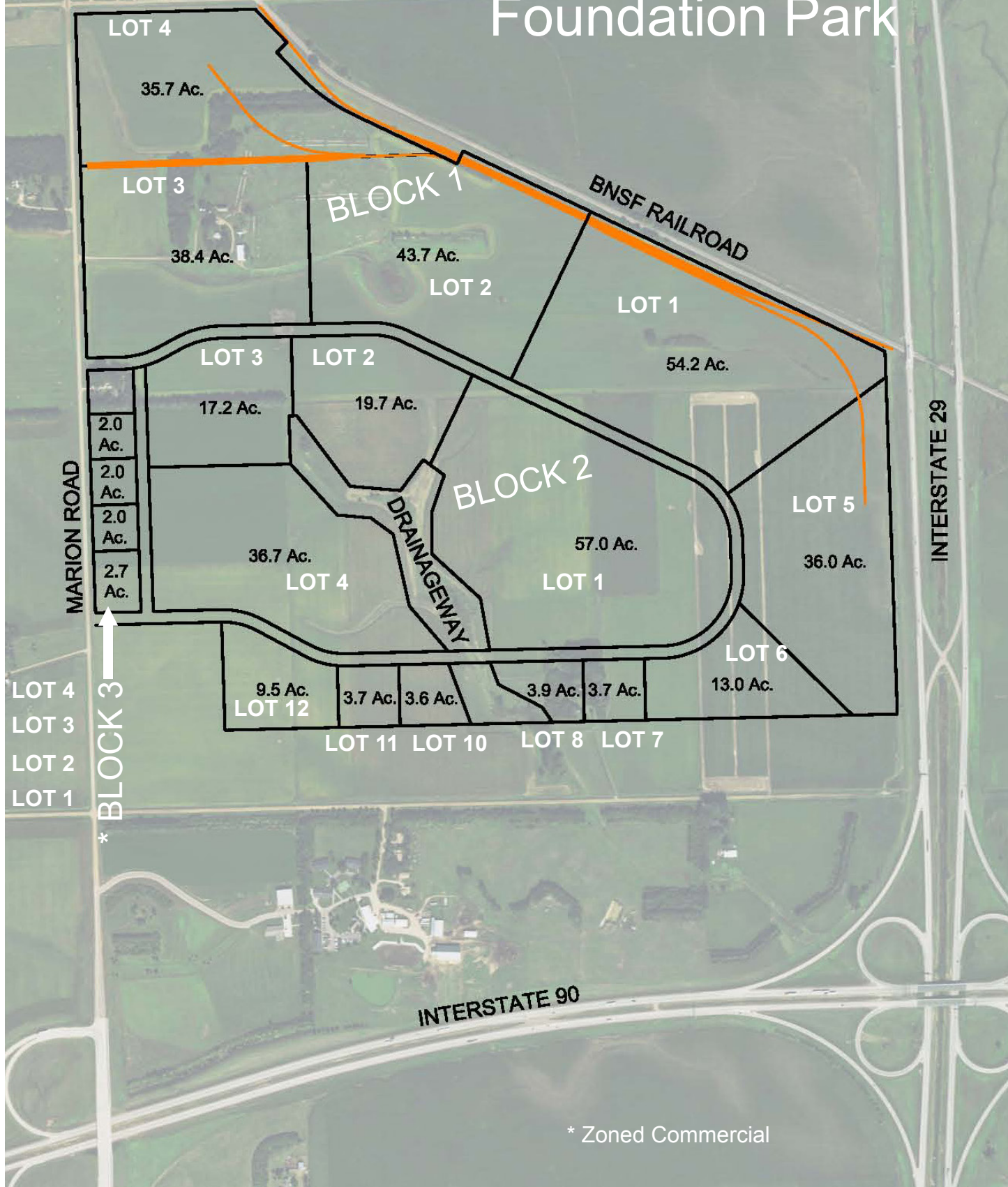
### Foundation Park Property Features:

- Located at intersection of I-29 & I-90
- BNSF Class I rail site
- Zoned I-2
- Subdividable
- All utilities to site
- Megasite - up to 390 acres available
- Prices starting at \$2.50 psf
- Anchor tenant pricing available
- Minutes from Sioux Falls Regional Airport (FSD)

For more information contact:

**Dean Dzedzic, Vice President**  
605.339.0103 (O)  
605.988.4259 (C)  
800.658.3373  
deand@siouxfalls.com

# Foundation Park



\* Zoned Commercial